

SKIOLD CRUSHERS

for all livestock sizes



SKIOLD MAKES THE DIFFERENCE!

- Large capacity range
- Low power consumption
- Drive on two or three rollers
- Easy operation and adjustment
- Efficient magnet separator at inlet
- Crushing of all usual raw materials
- Compact construction with optimal operation security



COMPLETE CRUSHER PROGRAMME

COMPLETE CRUSHER PROGRAMME

The complete SKIOLD crusher programme offers crushers for any livestock size, from a few horses up to several hundred dairy cows. The programme comprises 4 different basic models in several variants:

- two or three driven rollers
- different motor size
- different capacity
- different outlet height



COMPACT CONSTRUCTION

The three big crushers are sturdy and very compact in their construction, made of 8 and 12 mm steel plates and mounted on a strong frame. Several magnet separators at the inlet prevent foreign bodies from reaching the rollers, which are mounted in strong ball bearings. The crushers can be supplied with short or long legs equipped with vibration dampers, preventing vibrations to be transmitted to the foundation.

DRIVE ON TWO OR THREE ROLLERS

KB160 is available in two versions: one with two rollers and one with three rollers. The two roller version is meant for crushing of usual cereals like oats, barley and wheat. If crushing of peas, maize or beans is needed, the third roller is necessary for pre-crushing these raw materials before the final crushing procedure.

If you have a crusher with two rollers and later on need to crush e.g. peas, it is possible to mount a third roller in the existing crusher. The KB200 and KB300 crushers are as standard equipped with three rollers.

CONVENIENT TO HANDLE

The crushers are very handy. The crushing degree is adjusted by a strong U- shape handle with 1 or 2 big clamping bolts, adjusting via an eccentric, the rollers exactly in proportion to each other.

If the crusher is equipped with three rollers, it is necessary to adjust the distance of the third roller in proportion to the counter roller, depending on the actual raw material. The capacity is adjusted according to the load on the motor by a throttle at the inlet, after adjusting the distance between the rollers to the required crushing degree.



KB 80

KB80 is the smallest crusher in the SKIOLD programme. It is a compact and low noise crusher with simple operation via two adjusting handles, one for crushing degree and one for capacity. The crusher is mounted on anti vibration mountings thus reducing noise and vibration. KB80 is supplied complete with wall fittings, 3 m cable and plug. Fixed or pivotal floor stand and dust suction device with bag attachment are available as optional equipment. The KB80 crusher is especially well fitted for crushing of grain for horses, because it is possible to suck the dust out of the feed by using a standard vacuum cleaner via the special adaptor.

SKIOLD CRUSHERS

for all Purposes

KB160

This crusher size with 4 kW electric motor is the most popular size, as its capacity covers most needs on livestock farms with 40 to 150 dairy cows. KB160 can be delivered in two models: with two or three rollers which makes it well suited for normal cereals as well as peas and maize.

KB200

The KB200 crusher with three rollers is mainly used on larger farms with up to 200 dairy cows and where a larger capacity is

required.

KB300

As standard this crusher is equipped with three rollers, and the large capacity range addresses the needs of the largest farms.

HIGH CAPACITY / KW

The simple and thorough construction of the SKIOLD crushers secures a very high capacity/kW. The power consumption at crushing of grain is 50 - 70% lower than at milling.

MAGNET SEPARATOR

The big crushers are equipped as standard with a special inlet and heavy magnet separator, placed in a drawer which is easy to remove for inspection and emptying.

QUALITY ROLLERS

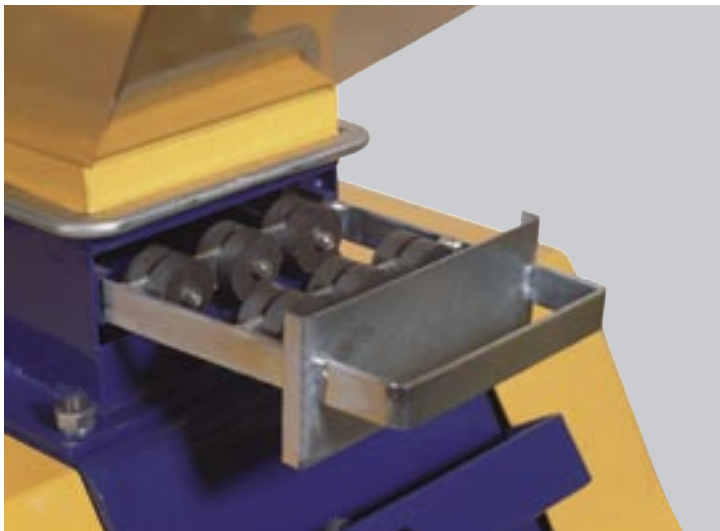
The rollers in all SKIOLD crushers are made of cast iron, giving an optimal crushing of the raw materials. The cast iron keeps the rough surface for a very long time, and the rollers are not worn smooth like rollers made of other very hard materials.

NOISE LEVEL

Crushers have always had a reputation for being very noisy. However, these latest SKIOLD crushers have vibration dampers on their feet, and with a slower running electric motor the noise level is reduced by up to 10 dbA with minimal effect on capacity.

CRUSHERS IN PLANTS

SKIOLD crushers can be incorporated in the other modular SKIOLD plants with mixers, silos, transport augers, cleaners, etc.



SKIOLD CRUSHERS

for all livestock sizes

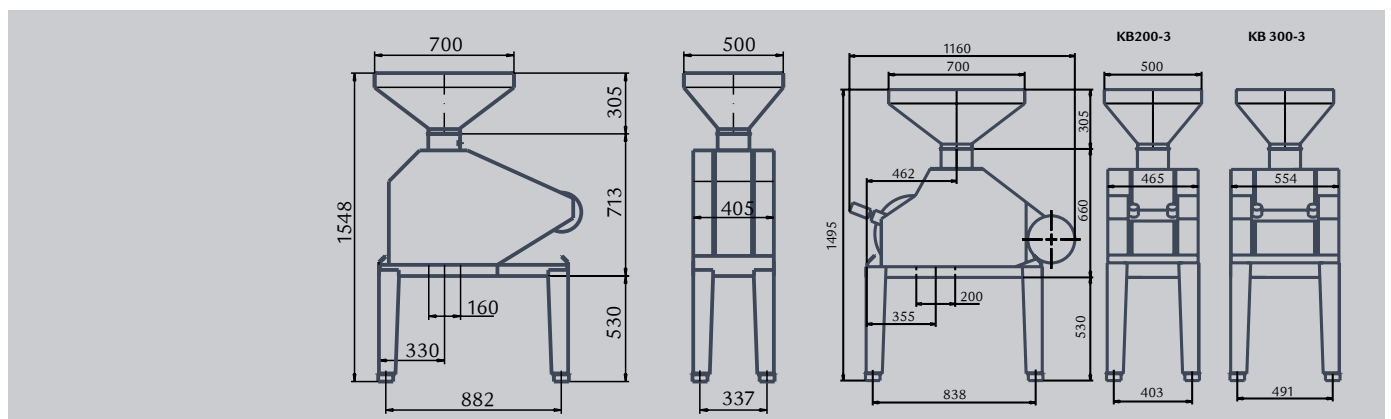
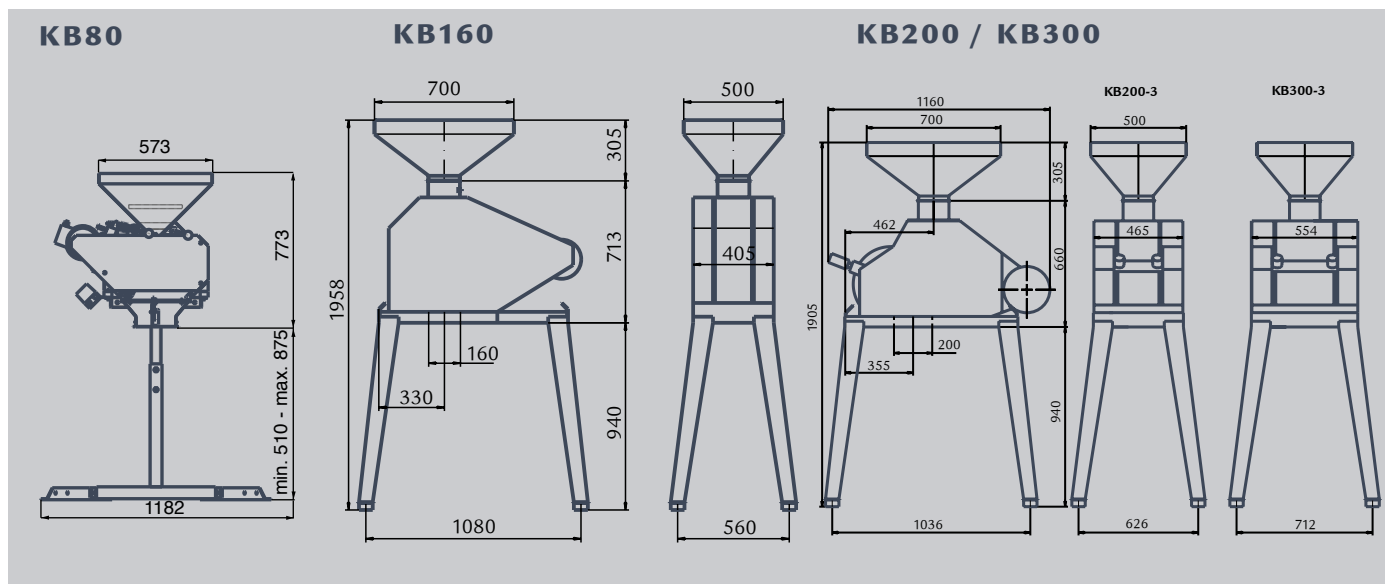
Technical specifications

	KB 80	KB 160-2/3	KB 200-3	KB 300-3
Motor 1400 rpm, kW	1,5	4	5,5	7,5
Number of driven rollers	2	2-3	2-3	3
Roller diameter, mm	250	290	290	290
Roller width, mm	80	160	200	300
Pre-crushing roller, diameter, mm	-	130	130	130
Pre-crushing roller, width, mm	-	150	190	290
Weight, incl. motor	142 kg	260 kg	344 kg	460 kg

Capacity in standard crops with roller distance of 0.1 - 0.5 mm

	KB 80	KB 160-2/3	KB 200-3	KB300-3
	kg/h / dbA	kg/h / dbA	kg/h / dbA	kg/h / dbA
Barley	160-500 / 88-89	450-1200 / 93-97	600-1500 / 90-96	900 - 2000 / 92-96
Wheat	170-800 / 88-89	500-1300 / 93-97	700-1900 / 88-94	1100-2500 / 92-96
Oats	250-550 / 88-89	750-1700 / 92-95	800-2000 / 88-92	1300-3000 / 92-94
Maize*		450-1100* / 96-97	750-1600 / 91-93	1000-2100 / 92-96
Peas*		400-1000* / 96-97	700-1300 / 93-94	900-1700 / 95-97

*only KB160-3



SKIOLD Reklame & Marketing - CB-2005.01.02 - All Rights Reserved.



SKIOLDA/S
 Kjeldgaardsvej 3
 DK-9300 Sæby · Denmark
 Tel: +45 99 89 88 87
 Fax: +45 99 89 88 77
 www.skiold.com · skiold@skiold.com



Vacuum & Milling Solutions
 PO Box 869
 Jimboomba Qld 4280 . Australia
 Ph: 0417 447 952
 Fax: 0755 477 677
 Email: martin@vacmillsolutions.com.au
 www.vacmillsolutions.com.au